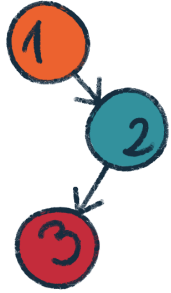


# 10 CLIL Parameters



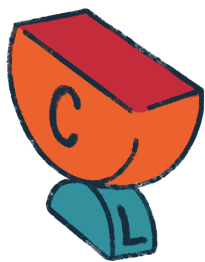
## SEQUENCE

Content knowledge is taught in a *specific sequence*, not as single lessons.



## KEY LANGUAGE

Key language needs to be highlighted and made salient.



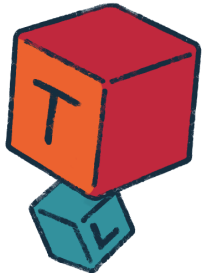
## CONCEPT > language

CLIL lessons are *concept-driven* rather than *language-driven*.



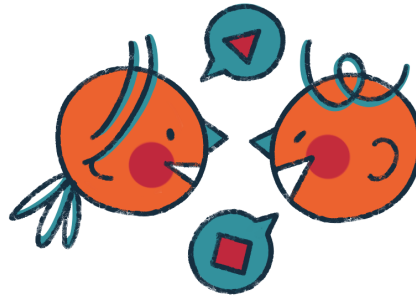
## Careful! INSTRUCTIONS

Instructions need to be carefully planned, staged, short and checked.



## TASK > language

CLIL tasks dictate the language to be used.



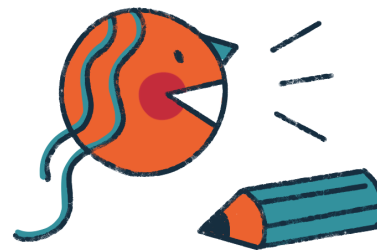
## INTERACTION s-s

Student-student interaction gives them time to rehearse both content and language.



## GUIDED MULTIMEDIA INPUT

CLIL teachers guide students through multimedia to deliver input.



## SUPPORTED OUTPUT

CLIL teachers need to support both written and oral output.



## 3 DIMENSIONS

In every lesson, content, language and procedures need to be adapted to the students' needs.



## THINKING

Students need to be engaged physically and/or involved mentally in the learning process.

CONTACT:

SOCIAL MEDIA:



[info@clilmatters.com](mailto:info@clilmatters.com)



[@clilmatters](https://www.instagram.com/clilmatters)



[@clil matters for primary](https://www.facebook.com/clilmattersforprimary)  
[@clil matters for secondary](https://www.facebook.com/clilmattersforsecondary)



[@clilmatters](https://www.youtube.com/clilmatters)



[@clil matters](https://www.linkedin.com/company/clil-matters)

